

PRODUCT CODE 5481

## SmartCare Crackshield

SmartCare Crackshield is a glass fibre based product used to hide spider web like cracks on interior walls. The technique "Reinforcement with multiple levelling" allows crack free and smoothening of walls before painting.

### PRODUCT BENEFITS

#### Provides Crack Free Wall

It provides a crack free wall by covering spider web like cracks and prevents them from appearing on painted surface.

#### Accommodates Minor Movement

It accommodates minor movement in such cracks and prevents them from appearing on painted surface



WATER BASED

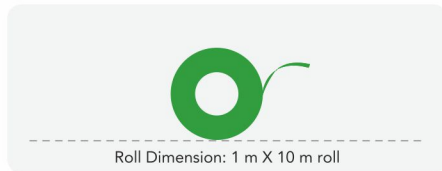
asianpaints

**LEAD FREE\* GUARANTEE**

\* All Asian Paints products contain no added Lead, Mercury, Arsenic or Chromium from April 2008.

### PRODUCT FEATURES

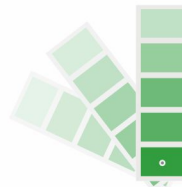
#### AVAILABLE PACKS



Shelf life: If stored in original sealed container, 12 months from the date of manufacturing

#### COLOURS AVAILABLE

**White\***

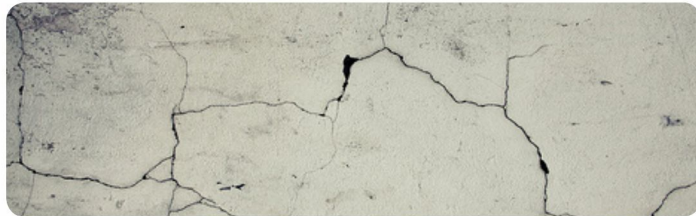


\*Please note: Crackshield is white coloured glass fibre sheet

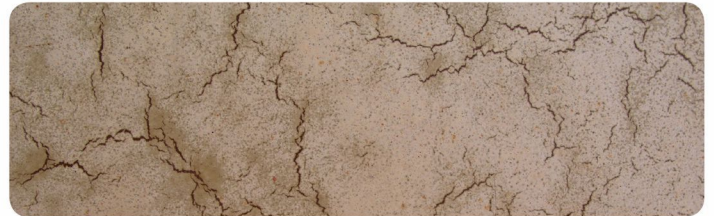
#### COVERAGE



### RECOMMENDED USAGE



To cover entire surface of interior walls having spider web like fine cracks



### HOW TO APPLY

#### APPLICATION PROCESS

APPLICATION PROCEDURE

STEP 1	Prepare the substrate by removing loose particles and dust and fill the cracks with Crack Seal	STEP 6	Re-add primer that may have been removed together with the lateral strips in the area along the seam. Level butt joint with a putty knife
STEP 2	Apply one coat of Asian Paints Deco prime-water based primer with 100% dilution	STEP 7	Apply another coat of Asian Paints Deco prime- water based primer uniformly in wet condition using 100% dilution, leave it to dry for 3-4 hours
STEP 3	Embed Crackshield from the roll or as a ready-cut in the wet primer, avoiding wrinkle formation or bubbles by smoothening it using a putty knife	STEP 8	Apply Polymer modified Asian Wall Putty to cover Crackshield (Mixing ratio –1 part polymer with 2 parts Asian Wall Putty, add water if required as per desired consistency). Allow to dry for 2-3 hrs
STEP 4	The webs should overlap in a width of approx. 5 cm	STEP 9	Apply a thin layer of normal AWP and do the sanding to provide smooth finish surface
STEP 5	Separate with a double cut and remove both lateral strips	STEP 10	Follow this with normal painting application process

## ADDITIONAL INFORMATION

### POST PAINTING CARE

For the best performance of the paint, ensure proper washing and cleaning of all algal and fungal growth, if any, at regular intervals of six months.

### TECHNICAL DETAILS

- a. Base:** Quality Textile glass fibre
- b. Colour:** White
- c. Specific Gravity:** 45 g/m<sup>2</sup>
- d. Thickness:** 360 µm
- e. Elongation @ break:** 5.2 %
- f. Tensile strength, Max. longitudinal:**  
140 N/50 mm
- g. Tensile strength, Max. Transverse:**  
105 N/50 mm

### PRECAUTIONS

- › Ensure there are no wrinkles while embedding Crackshield and the product is levelled using a putty knife in a single direction.
- › Do not apply when ambient temperature is less than 10°C or if the temperature might drop to this level within 4 hrs of application.
- › Do not dispose of excess material over natural vegetation.

### SAFETY FEATURES

- › Kindly refer to the MSDS for Asian Paints Crackshield which gives detailed information on safety measures while handling the paint, which is available on request.
- › Store the container with the lid tightly closed in an upright position, in a cool, dry place
- › Keep out of reach of children and away from eatables.
- › May be harmful if swallowed. In case of ingestion seek immediate medical attention.
- › It is recommended to wear suitable nose pad during sanding and surface preparation to avoid dust inhalation.
- › In the event of spills, contain spillage using sand or earth.
- › No added Lead, Mercury or Chromium compounds.
- › Non flammable.